

# CAMBODIA MALARIA BULLETIN

JUNE 2012 BULLETIN, DATA TO 2ND QUARTER, CNM, CAMBODIA

Estimated coverage with LLIN or retreated mosquito net	Target <sup>1</sup>	Mobile <sup>2</sup>
No. of persons at risk of malaria	3,236,449	439,446
No. of LLIN distributed YTD	1,376,528	91,368
No. of LLIN distributed YTD	187,565	2,841
No. of conventional nets distributed and retreated YTD	3,753	0
No. of long lasting nets distributed in last 3 years	3,140,930	94,209
Estimated coverage with LLIN / treated net (1 net / 1 pers)	97%	21%

<sup>1</sup> Pop of target villages

<sup>2</sup> Mobile pop (est from census)

Indicators	HIS			VMW			Total		
	2011	2012	Change	2011	2012	Change	2011	2012	Change
Malaria cases	25,572	23,879	-7%	19,930	15,027	-27%	45,502	38,906	-14%
Malaria Incidence <sup>3</sup>	1.78	1.62	-9%	18.55	13.58	-27%	3.17	2.65	-17%
Malaria deaths	31	28	-10%	2	0	-100%	33	28	-15%
Mortality rate <sup>4</sup>	0.22	0.19	-12%	0.19	0.00	-100%	0.23	0.19	-17%

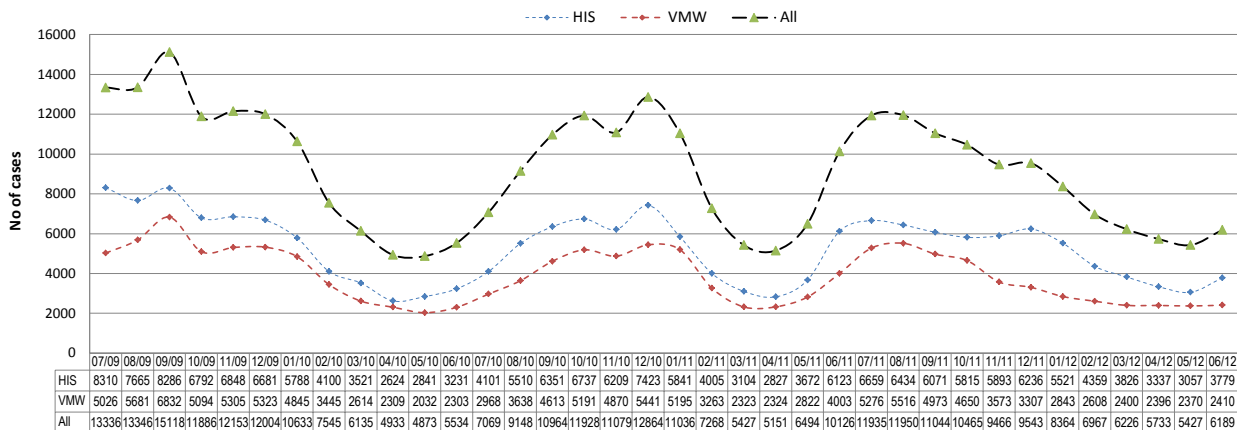
<sup>3</sup> Cases per 1000 pop

<sup>4</sup> Deaths per 100,000 pop

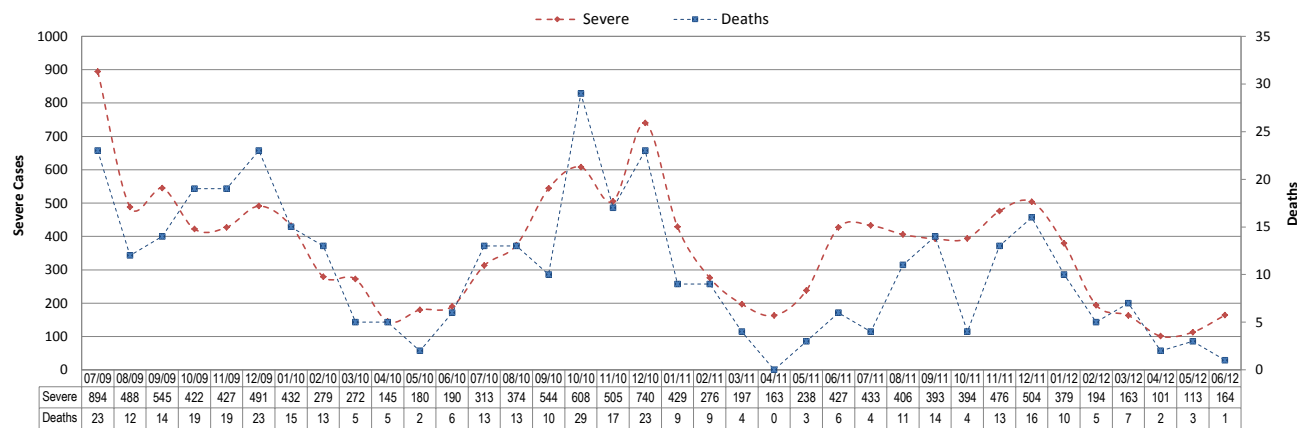
<sup>5</sup> VMW rates uses VMW village populations

## TRENDS IN SURVEILLANCE

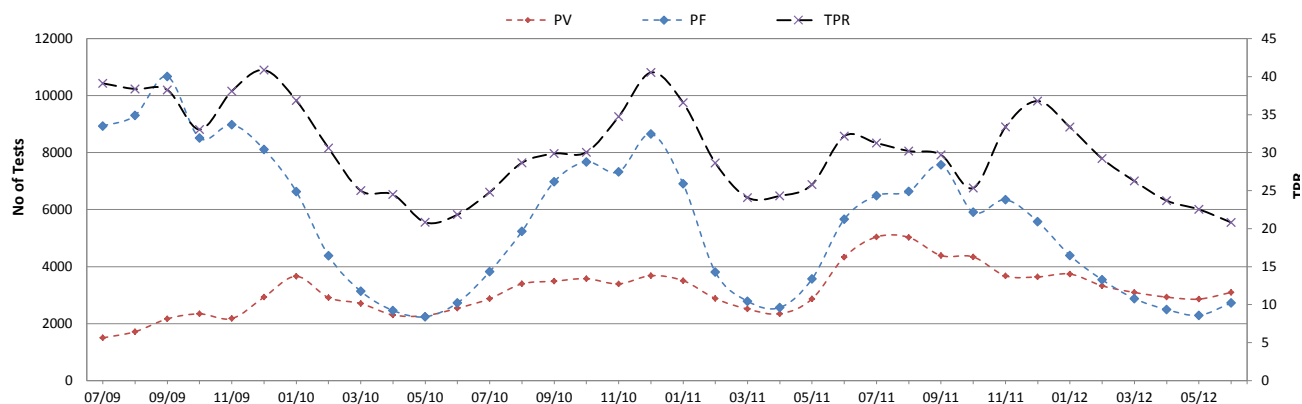
Treated malaria cases from HIS and VMW by month



Severe malaria cases and deaths from HIS by month



Malaria test results (VMW and HIS) by species<sup>6</sup>

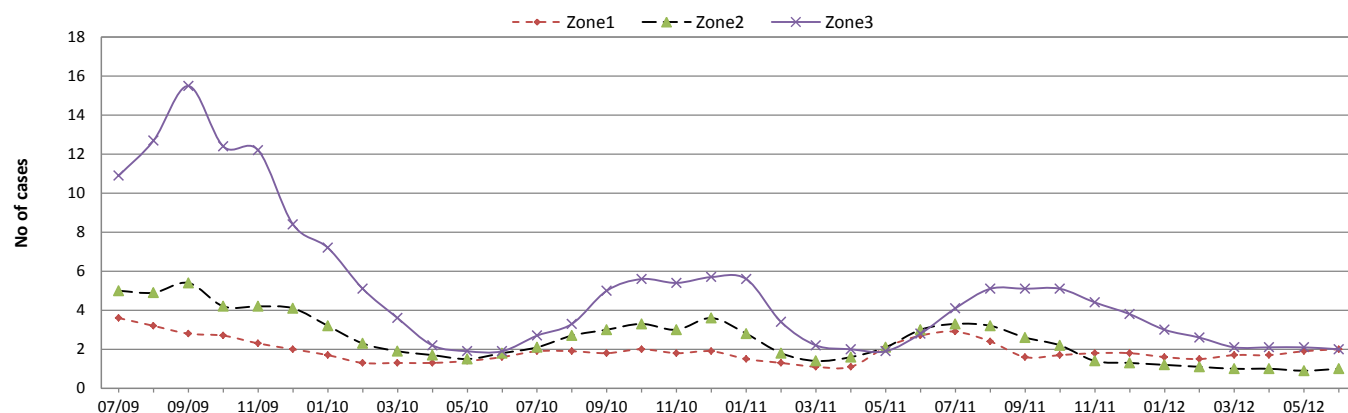


## CONTAINMENT INDICATORS

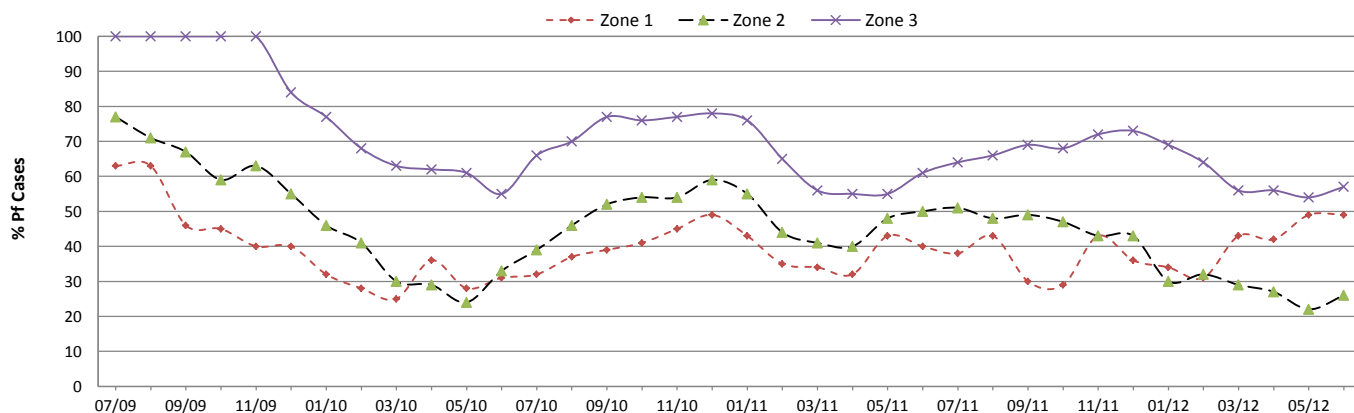
Estimated coverage (possession) with LLIN or retreated mosquito net					VMW RDT tests						
Indicators	Zone 1	Zone 2	Zone 3	Total	Zone	TPR			%Pf		
						2011	2012	Change	2011	2012	Change
No. of persons at risk of malaria (pop of target villages)	319,096	1,304,144	1,604,758	3,236,449	Zone 1	35%	39%	11%	39%	42%	8%
No. of LLIN distributed YTD	157,573	790,196	422,765	1,370,534		Zone 2	33%	24%	-29%	48%	28%
No. of LLIN distributed YTD	12,948	85,095	88,678	186,721	Zone 3		37%	33%	-13%	64%	60%
No. of conventional nets distributed and retreated YTD	0	3	3,750	3,753							
No. of long lasting nets distributed in previous 3 years	375,887	1,296,249	1,461,956	3,134,092							
Estimated coverage with LLIN / treated net (1 net / 1 pers)	118%	99%	91%	97%							

National Surveillance data for the period Jan - Jun												
Indicators	HIS treated cases			VMW treated cases			Total treated cases			Incidence (per 1000 pop)		
	2011	2012	Change	2011	2012	Change	2011	2012	Change	2011	2012	Change
Z1 Total malaria cases	2,389	1,782	-25%	2,283	2,661	17%	4,672	4,443	-5%	14.64	13.92	-5%
Z1 Severe malaria cases	170	142	-16%				170	142	-16%	0.53	0.45	-16%
Z1 Malaria deaths	3	1	-67%	0	0	0%	3	1	-67%	0.01	0.00	-67%
Z2 Total malaria cases	8,659	7,105	-18%	7,749	4,920	-37%	16,408	12,025	-27%	12.58	9.22	-27%
Z2 Severe malaria cases	525	288	-45%				525	288	-45%	0.40	0.22	-45%
Z2 Malaria deaths	9	3	-67%	1	0	-100%	9	3	-67%	0.01	0.00	-67%
Z3 Total malaria cases	8,906	8,823	-1%	9,858	7,435	-25%	18,764	16,258	-13%	11.69	10.13	-13%
Z3 Severe malaria cases	634	491	-23%				634	491	-23%	0.40	0.31	-23%
Z3 Malaria deaths	13	18	38%	1	0	-100%	13	18	38%	0.01	0.01	38%
Z4 Total malaria cases	5,618	6,169	10%	0	0	0%	5,618	6,169	10%	n/a	n/a	n/a
Z4 Severe malaria cases	401	193	-52%				401	193	-52%	n/a	n/a	n/a
Z4 Malaria deaths	6	6	0%	0	0	0%	6	6	0%	n/a	n/a	n/a

Malaria Cases per VMW by month



Percentage of Pf cases diagnosed by VMW per month



Surveillance Data by District, Jan-Jun 2012

Province / Op. District	Population (x1000)		Health Facility (HIS)									Village Malaria Workers															Incidence (per 1000 pop)								
			All Cases			Severe			Deaths			All Cases			Treated Pf			Treated Pv			Referred Pf			Referred Pv			TPR			2011	2012	Change			
			2011	2012	Change	2011	2012	Change	2011	2012	Change	2011	2012	Change	2011	2012	Change	2011	2012	Change	2011	2012	Change	2011	2012	Change	%	%	%						
Mongkol Borei	246	252	95	121	27%	0	1	100%	0	0	0%	0	0	0%	0	0	0%	0	0	0%	0	0	0%	0	0	0%	0	0	0%	0%	0%	0%	0.39	0.48	24%
Ou Chrov	211	216	71	83	17%	7	12	71%	0	0	0%	33	18	-45%	7	11	57%	26	6	-77%	0	1	100%	0	0	0%	6%	4%	-30%	0.49	0.46	-6%			
Preah Net Preah	144	148	33	34	3%	1	1	0%	0	0	0%	7	5	-29%	0	0	0%	7	5	-29%	0	0	0%	0	0	0%	3%	2%	-44%	0.28	0.26	-5%			
Thma Puok	125	128	20	27	35%	0	0	0%	0	0	0%	13	20	54%	1	4	300%	5	15	200%	0	0	0%	7	1	-86%	4%	5%	49%	0.21	0.36	73%			
<b>Banteay Meanchey</b>	<b>727</b>	<b>744</b>	<b>219</b>	<b>265</b>	<b>21%</b>	<b>8</b>	<b>14</b>	<b>75%</b>	<b>0</b>	<b>0</b>	<b>0%</b>	<b>53</b>	<b>43</b>	<b>-19%</b>	<b>8</b>	<b>15</b>	<b>88%</b>	<b>38</b>	<b>26</b>	<b>-32%</b>	<b>0</b>	<b>1</b>	<b>100%</b>	<b>7</b>	<b>1</b>	<b>-86%</b>	<b>5%</b>	<b>4%</b>	<b>-16%</b>	<b>0.36</b>	<b>0.41</b>	<b>13%</b>			
Thma Koul	214	219	89	116	30%	3	1	-67%	0	0	0%	6	0	-100%	0	0	0%	6	0	-100%	0	0	0%	0	0	0%	60%	0%	-100%	0.44	0.53	19%			
Mong Russei	175	179	325	340	5%	2	5	150%	0	1	100%	222	155	-30%	67	53	-21%	152	101	-34%	1	0	-100%	2	1	-50%	27%	20%	-25%	3.12	2.76	-11%			
Sampov Luon	141	145	221	482	118%	14	9	-36%	0	0	0%	107	212	98%	28	57	104%	77	151	96%	1	3	200%	1	1	0%	14%	25%	78%	2.31	4.77	107%			
Battambang	373	382	658	635	-3%	40	59	48%	0	1	100%	703	766	9%	256	377	47%	439	382	-13%	3	6	100%	5	1	-80%	30%	33%	11%	3.62	3.65	1%			
Sangkae	187	192	33	62	88%	0	0	0%	0	0	0%	0	0	0%	0	0	0%	0	0	0%	0	0	0%	0	0	0%	0%	0%	0%	0.18	0.32	83%			
<b>Battambang</b>	<b>1100</b>	<b>1126</b>	<b>1326</b>	<b>1635</b>	<b>23%</b>	<b>59</b>	<b>74</b>	<b>25%</b>	<b>0</b>	<b>2</b>	<b>200%</b>	<b>1038</b>	<b>1133</b>	<b>9%</b>	<b>353</b>	<b>488</b>	<b>38%</b>	<b>677</b>	<b>634</b>	<b>-6%</b>	<b>5</b>	<b>9</b>	<b>80%</b>	<b>8</b>	<b>3</b>	<b>-63%</b>	<b>26%</b>	<b>29%</b>	<b>10%</b>	<b>2.14</b>	<b>2.45</b>	<b>14%</b>			
Chamkar Leu - Stueng Trang	168	172	328	470	43%	24	24	0%	2	0	-100%	175	209	19%	65	64	-2%	110	144	31%	0	1	100%	0	0	0%	44%	45%	1%	2.99	3.94	32%			
Choeng Prey - Batheay	200	205	80	86	8%	7	1	-86%	0	0	0%	0	0	0%	0	0	0%	0	0	0%	0	0	0%	0	0	0%	0%	0%	0%	0.40	0.42	5%			
Kampong Cham - Kampong Siem	293	300	146	326	123%	16	55	244%	1	4	300%	0	0	0%	0	0	0%	0	0	0%	0	0	0%	0	0	0%	0%	0%	0%	0.50	1.09	118%			
Kroch Chhmar - Stueng Trang	108	111	95	161	69%	0	0	0%	0	0	0%	0	0	0%	0	0	0%	0	0	0%	0	0	0%	0	0	0%	0%	0%	0%	0.88	1.46	66%			
Memut	159	163	344	232	-33%	21	15	-29%	0	0	0%	212	131	-38%	83	34	-59%	127	97	-24%	1	0	-100%	1	0	-100%	22%	15%	-33%	3.48	2.23	-36%			
O Reang Ov - Koh Soutin	87	89	140	315	125%	3	0	-100%	0	0	0%	0	0	0%	0	0	0%	0	0	0%	0	0	0%	0	0	0%	0%	0%	0%	1.61	3.54	120%			
Ponhea Krek - Dambae	231	237	725	709	-2%	17	4	-76%	0	0	0%	172	109	-37%	58	28	-52%	109	81	-26%	5	0	-100%	0	0	0%	40%	35%	-12%	3.85	3.45	-10%			
Prey Chhor - Kang Meas	189	193	118	183	55%	0	0	0%	0	0	0%	0	0	0%	0	0	0%	0	0	0%	0	0	0%	0	0	0%	0%	0%	0%	0.63	0.95	51%			
Srei Santhor - Kang Meas	145	149	38	37	-3%	0	0	0%	0	0	0%	0	0	0%	0	0	0%	0	0	0%	0	0	0%	0	0	0%	0%	0%	0%	0.26	0.25	-5%			
Tbong Kkmum - Kroch Chhmar	219	224	405	584	44%	48	66	38%	0	3	300%	0	0	0%	0	0	0%	0	0	0%	0	0	0%	0	0	0%	0%	0%	0%	1.85	2.61	41%			
<b>Kampong Cham</b>	<b>1801</b>	<b>1844</b>	<b>2419</b>	<b>3103</b>	<b>28%</b>	<b>136</b>	<b>165</b>	<b>21%</b>	<b>3</b>	<b>7</b>	<b>133%</b>	<b>559</b>	<b>449</b>	<b>-20%</b>	<b>210</b>	<b>127</b>	<b>-40%</b>	<b>347</b>	<b>322</b>	<b>-7%</b>	<b>6</b>	<b>1</b>	<b>-83%</b>	<b>1</b>	<b>0</b>	<b>-100%</b>	<b>31%</b>	<b>27%</b>	<b>-14%</b>	<b>1.65</b>	<b>1.93</b>	<b>17%</b>			
Kampong Chhnang	229	234	251	197	-22%	10	20	100%	0	0	0%	0	0	0%	0	0	0%	0	0	0%	0	0	0%	0	0	0%	0%	0%	0%	1.10	0.84	-23%			
Kampong Tralach	156	160	246	223	-9%	29	8	-72%	0	0	0%	0	0	0%	0	0	0%	0	0	0%	0	0	0%	0	0	0%	0%	0%	0%	1.58	1.40	-11%			
Boribo	121	124	196	131	-33%	0	4	400%	0	0	0%	0	0	0%	0	0	0%	0	0	0%	0	0	0%	0	0	0%	0%	0%	0%	1.62	1.06	-35%			
<b>Kampong Chhnang</b>	<b>506</b>	<b>518</b>	<b>693</b>	<b>551</b>	<b>-20%</b>	<b>39</b>	<b>32</b>	<b>-18%</b>	<b>0</b>	<b>0</b>	<b>0%</b>	<b>0</b>	<b>0</b>	<b>0%</b>	<b>0</b>	<b>0</b>	<b>0%</b>	<b>0</b>	<b>0</b>	<b>0%</b>	<b>0</b>	<b>0</b>	<b>0%</b>	<b>0</b>	<b>0</b>	<b>0%</b>	<b>0%</b>	<b>0%</b>	<b>0%</b>	<b>1.37</b>	<b>1.06</b>	<b>-22%</b>			
Kampong Speu.	419	429	602	501	-17%	44	31	-30%	1	0	-100%	1376	684	-50%	668	222	-67%	395	459	16%	174	0	-100%	139	3	-98%	56%	33%	-41%	3.97	2.75	-31%			
Kong Pisey	240	246	446	497	11%	23	12	-48%	0	0	0%	0	0	0%	0	0	0%	0	0	0%	0	0	0%	0	0	0%	0%	0%	0%	1.86	2.02	9%			
Ou Dongk	110	112	377	299	-21%	5	4	-20%	0	0	0%	402	203	-50%	232	66	-72%	144	135	-6%	1	0	-100%	25	2	-92%	51%	31%	-39%	6.86	4.45	-35%			
<b>Kampong Speu</b>	<b>769</b>	<b>788</b>	<b>1425</b>	<b>1297</b>	<b>-9%</b>	<b>72</b>	<b>47</b>	<b>-35%</b>	<b>1</b>	<b>0</b>	<b>-100%</b>	<b>1778</b>	<b>887</b>	<b>-50%</b>	<b>900</b>	<b>288</b>	<b>-68%</b>	<b>539</b>	<b>597</b>	<b>11%</b>	<b>175</b>	<b>0</b>	<b>-100%</b>	<b>164</b>	<b>5</b>	<b>-97%</b>	<b>55%</b>	<b>32%</b>	<b>-41%</b>	<b>3.72</b>	<b>2.77</b>	<b>-26%</b>			
Baray and Santuk	248	254	253	380	50%	8	2	-75%	1	0	-100%	221	259	17%	101	104	3%	120	127	6%	0	21	2100%	0	7	700%	24%	35%	44%	1.91	2.40	26%			
Kampong Thom	287	294	506	444	-12%	56	27	-52%	1	3	200%	1511	835	-45%	754	282	-63%	730	460	-37%	1	35	3400%	26	58	123%	40%	34%	-15%	6.94	4.04	-42%			
Stong	143	146	100	104	4%	24	2	-92%	1	1	0%	276	193	-30%	93	54	-42%	183	139	-24%	0	0	0%	0	0	0%	25%	19%	-26%	2.63	2.03	-23%			
<b>Kampong Thom</b>	<b>678</b>	<b>694</b>	<b>859</b>	<b>928</b>	<b>8%</b>	<b>88</b>	<b>31</b>	<b>-65%</b>	<b>3</b>	<b>4</b>	<b>33%</b>	<b>2008</b>	<b>1287</b>	<b>-36%</b>	<b>948</b>	<b>440</b>	<b>-54%</b>	<b>1035</b>	<b>726</b>	<b>-30%</b>	<b>1</b>	<b>56</b>	<b>5500%</b>	<b>26</b>	<b>65</b>	<b>150%</b>	<b>35%</b>	<b>31%</b>	<b>-12%</b>	<b>4.19</b>	<b>3.02</b>	<b>-28%</b>			
Angkor Chey	111	113	34	47	38%	5	5	0%	0	0	0%	0	0	0%	0	0	0%	0	0	0%	0	0	0%	0	0	0%	0%	0%	0%	0.31	0.41	35%			
Chhouk	204	209	887	481	-46%	67	42	-37%	1	0	-100%	1215	435	-64%	611	81	-87%	596	354	-41%	7	0	-100%	1	0	-100%	50%	32%	-35%	10.27	4.39	-57%			
Kampong Trach	160	164	127	72	-43%	2	0	-100%	0	0	0%	0	0	0%	0	0	0%	0	0	0%	0	0	0%	0	0	0%	0%	0%	0%	0.79	0.44	-45%			
Kampot	154	158	874	421	-52%	61	10	-84%	1	0	-100%	168	146	-13%	106	42	-60%	62	104	68%	0	0	0%	0	0	0%	77%	33%	-56%	6.77	3.60	-47%			
<b>Kampot</b>	<b>628</b>	<b>643</b>	<b>1922</b>	<b>1021</b>	<b>-47%</b>	<b>135</b>	<b>57</b>	<b>-58%</b>	<b>2</b>	<b>0</b>	<b>-100%</b>	<b>1383</b>	<b>581</b>	<b>-58%</b>	<b>721</b>	<b>123</b>	<b>-83%</b>	<b>659</b>	<b>458</b>	<b>-31%</b>	<b>7</b>	<b>0</b>	<b>-100%</b>	<b>1</b>	<b>0</b>	<b>-100%</b>	<b>52%</b>	<b>32%</b>	<b>-37%</b>	<b>5.26</b>	<b>2.49</b>	<b>-53%</b>			



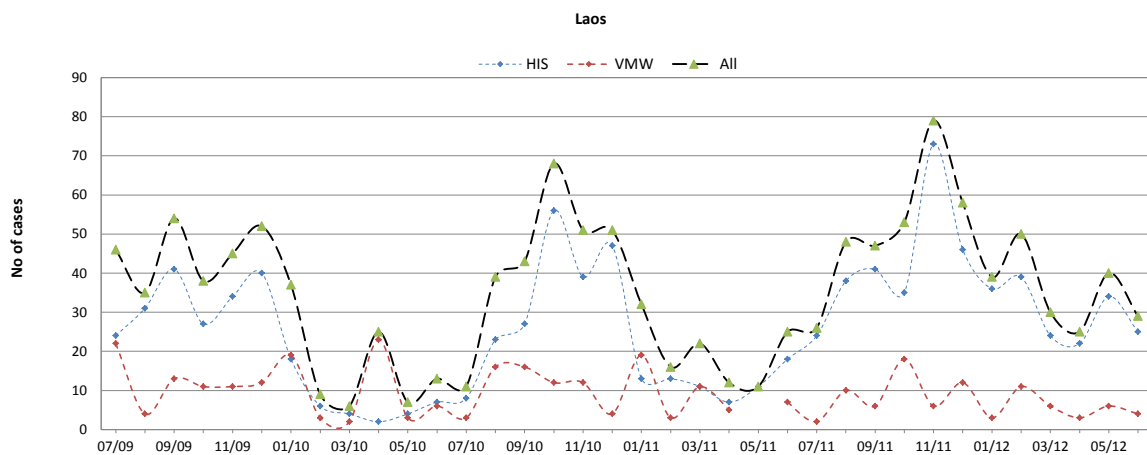
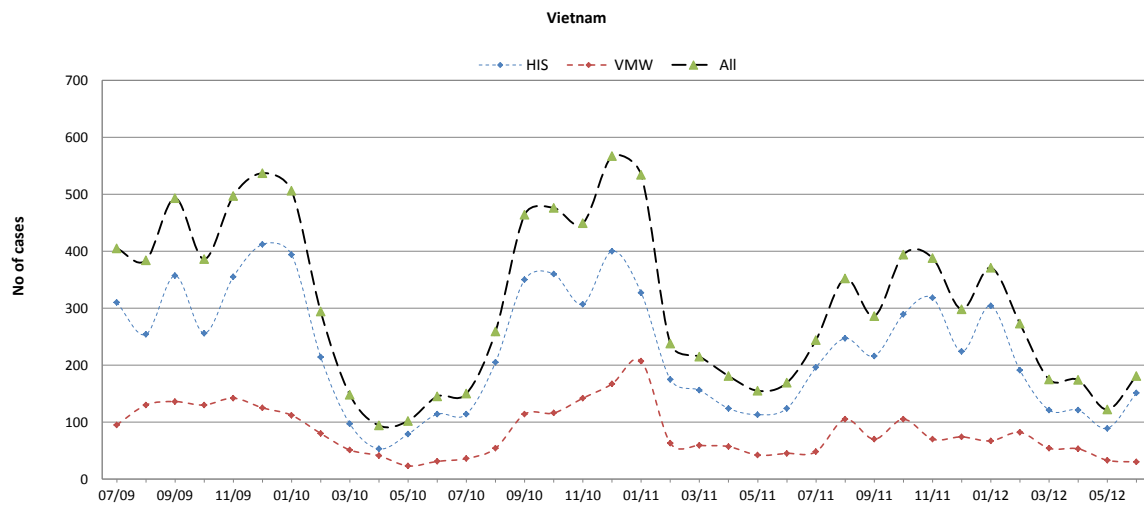
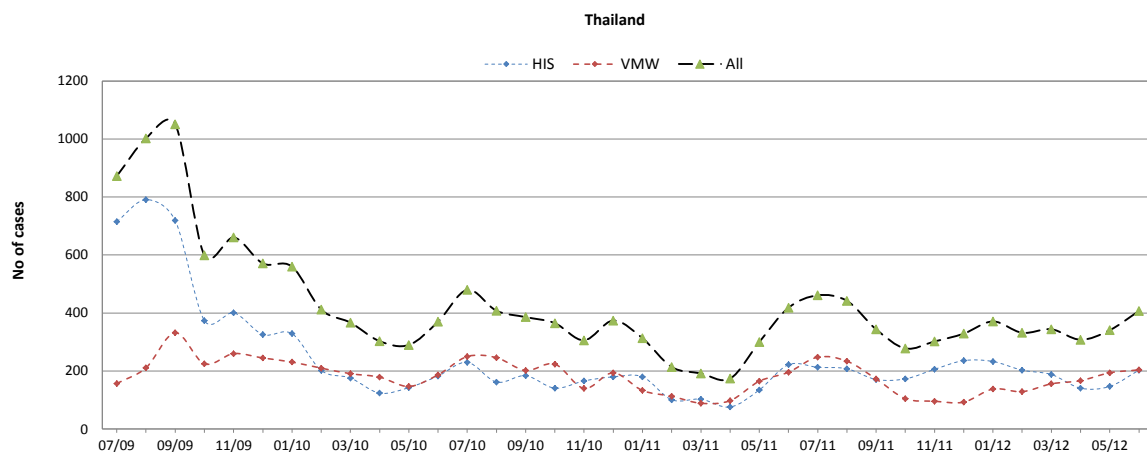
Surveillance Data by District, Jan-Jun 2012

Province / Op. District	Population (x1000)		Health Facility (HIS)									Village Malaria Workers															Incidence (per 1000 pop)								
			All Cases			Severe			Deaths			All Cases			Treated Pf			Treated Pv			Referred Pf			Referred Pv			TPR								
			2011	2012	Change	2011	2012	Change	2011	2012	Change	2011	2012	Change	2011	2012	Change	2011	2012	Change	2011	2012	Change	2011	2012	Change	2011	2012	Change	2011	2012	Change	2011	2012	Change
			n	n	%	n	n	%	n	n	%	n	n	%	n	n	%	n	n	%	n	n	%	n	n	%	n	n	%	%	%	Change	n	n	%
Kralanh	87	89	219	134	-39%	8	14	75%	1	0	-100%	186	101	-46%	117	58	-50%	27	43	59%	1	0	-100%	41	0	-100%	9%	5%	-41%	4.18	2.64	-37%			
Siem Reap	386	395	552	627	14%	36	33	-8%	4	2	-50%	479	490	2%	187	150	-20%	202	321	59%	9	6	-33%	81	13	-84%	33%	38%	16%	2.44	2.78	14%			
Sot Nikum	271	278	582	759	30%	0	1	100%	0	0	0%	500	343	-31%	317	133	-58%	180	210	17%	0	0	0%	3	0	-100%	38%	27%	-28%	3.98	3.97	0%			
Ankor Chhum	210	215	645	557	-14%	0	0	0%	0	0	0%	346	308	-11%	130	96	-26%	34	209	515%	14	0	-100%	168	3	-98%	24%	19%	-23%	3.85	4.01	4%			
Siem Reap	957	980	1998	2077	4%	44	48	9%	5	2	-60%	1511	1242	-18%	751	437	-42%	443	784	77%	24	6	-75%	293	16	-95%	24%	21%	-15%	3.34	3.37	1%			
Sihanouk	236	241	733	183	-75%	4	3	-25%	1	0	-100%	93	43	-54%	53	11	-79%	29	31	7%	5	0	-100%	6	1	-83%	61%	42%	-31%	3.46	0.93	-73%			
Sihanoukville	238	243	733	183	-75%	4	3	-25%	1	0	-100%	93	43	-54%	53	11	-79%	29	31	7%	5	0	-100%	6	1	-83%	61%	42%	-31%	3.43	0.92	-73%			
Steung Treng	119.16	122.02	549	1010	84%	24	32	33%	1	2	100%	1625	1662	2%	1047	1096	5%	577	557	-3%	1	8	700%	0	1	100%	33%	37%	12%	18.24	21.82	20%			
Stung Treng	119.16	122.02	549	1010	84%	24	32	33%	1	2	100%	1625	1662	2%	1047	1096	5%	577	557	-3%	1	8	700%	0	1	100%	33%	37%	12%	18.24	21.82	20%			
Chi Phu	0.00	0.00	25	11	-56%	3	0	-100%	0	0	0%	0	0	0%	0	0	0%	0	0	0%	0	0	0%	0	0	0%	0%	0%	0%			0%			
Romeas Hek	0.00	0.00	43	58	35%	10	4	-60%	0	0	0%	0	0	0%	0	0	0%	0	0	0%	0	0	0%	0	0	0%	0%	0%	0%			0%			
Svay Rieng	0.00	0.00	26	62	138%	6	9	50%	1	2	100%	0	0	0%	0	0	0%	0	0	0%	0	0	0%	0	0	0%	0%	0%	0%			0%			
Svay Rieng	518.39	530.83	94	131	39%	19	13	-32%	1	2	100%	0	0	0%	0	0	0%	0	0	0%	0	0	0%	0	0	0%	0%	0%	0%	0.18	0.25	36%			
Ang Rokar	124.19	127.17	353	364	3%	11	8	-27%	0	0	0%	19	16	-16%	10	1	-90%	9	15	67%	0	0	0%	0	0	0%	0%	28%	28%	3.00	2.99	0%			
Bati	195.29	199.98	17	26	53%	0	0	0%	0	0	0%	0	0	0%	0	0	0%	0	0	0%	0	0	0%	0	0	0%	0%	0%	0%	0.09	0.13	49%			
Daun Keo	198.00	202.75	49	57	16%	14	4	-71%	1	1	0%	0	0	0%	0	0	0%	0	0	0%	0	0	0%	0	0	0%	0%	0%	0%	0.25	0.28	14%			
Kirivong	242.99	248.82	97	94	-3%	1	2	100%	0	0	0%	0	0	0%	0	0	0%	0	0	0%	0	0	0%	0	0	0%	0%	0%	0%	0.40	0.38	-5%			
Prey Kabass	146.57	150.09	29	11	-62%	0	0	0%	0	0	0%	0	0	0%	0	0	0%	0	0	0%	0	0	0%	0	0	0%	0%	0%	0%	0.20	0.07	-63%			
Takeo	907.04	928.80	545	552	1%	26	14	-46%	1	1	0%	19	16	-16%	10	1	-90%	9	15	67%	0	0	0%	0	0	0%	36%	28%	-23%	0.62	0.61	-2%			
Samraong	197.99	202.75	1217	1289	6%	50	36	-28%	0	0	0%	1352	1063	-21%	227	85	-63%	1109	958	-14%	6	2	-67%	10	18	80%	34%	31%	-10%	12.89	11.50	-11%			
Oddar Meanchey	197.99	202.75	1217	1289	6%	50	36	-28%	0	0	0%	1352	1063	-21%	227	85	-63%	1109	960	-13%	6	2	-67%	10	18	80%	34%	31%	-10%	12.89	11.51	-11%			
Kep	38.39	39.31	73	33	-55%	4	0	-100%	0	0	0%	0	0	0%	0	0	0%	0	0	0%	0	0	0%	0	0	0%	0%	0%	0%	1.90	0.84	-56%			
Kep	38.39	39.31	73	33	-55%	4	0	-100%	0	0	0%	0	0	0%	0	0	0%	0	0	0%	0	0	0%	0	0	0%	0%	0%	0%	1.90	0.84	-56%			
Pailin	75.56	77.38	215	241	12%	5	8	60%	0	0	0%	138	210	52%	18	23	28%	93	172	85%	23	12	-48%	4	3	-25%	21%	30%	44%	4.31	5.63	31%			
Pailin	75.56	77.37	215	241	12%	5	8	60%	0	0	0%	138	210	52%	24	25	4%	93	172	85%	23	12	-48%	4	3	-25%	21%	30%	44%	4.39	5.66	29%			
<b>National Total</b>	<b>14357.83</b>	<b>14702.42</b>	<b>25572</b>	<b>23879</b>	<b>-7%</b>	<b>1730</b>	<b>1114</b>	<b>-36%</b>	<b>31</b>	<b>28</b>	<b>-10%</b>	<b>20810</b>	<b>15271</b>	<b>-27%</b>	<b>11092</b>	<b>6956</b>	<b>-37%</b>	<b>8838</b>	<b>8071</b>	<b>-9%</b>	<b>307</b>	<b>117</b>	<b>-62%</b>	<b>613</b>	<b>138</b>	<b>-77%</b>	<b>35%</b>	<b>30%</b>	<b>-16%</b>	<b>3.17</b>	<b>2.65</b>	<b>-17%</b>			

Malaria Bulletin Ver 2 - Generated from CNM Malaria Database on 14/09/2012 08:36:36 including data from Online MOH HIS

# CAMBODIA MALARIA BULLETIN

## MALARIA TRENDS IN BORDER AREAS\*



\* HIS data from health facilities serving border villages plus VMW data from border villages (<10km from the border).