

CAMBODIA MALARIA BULLETIN

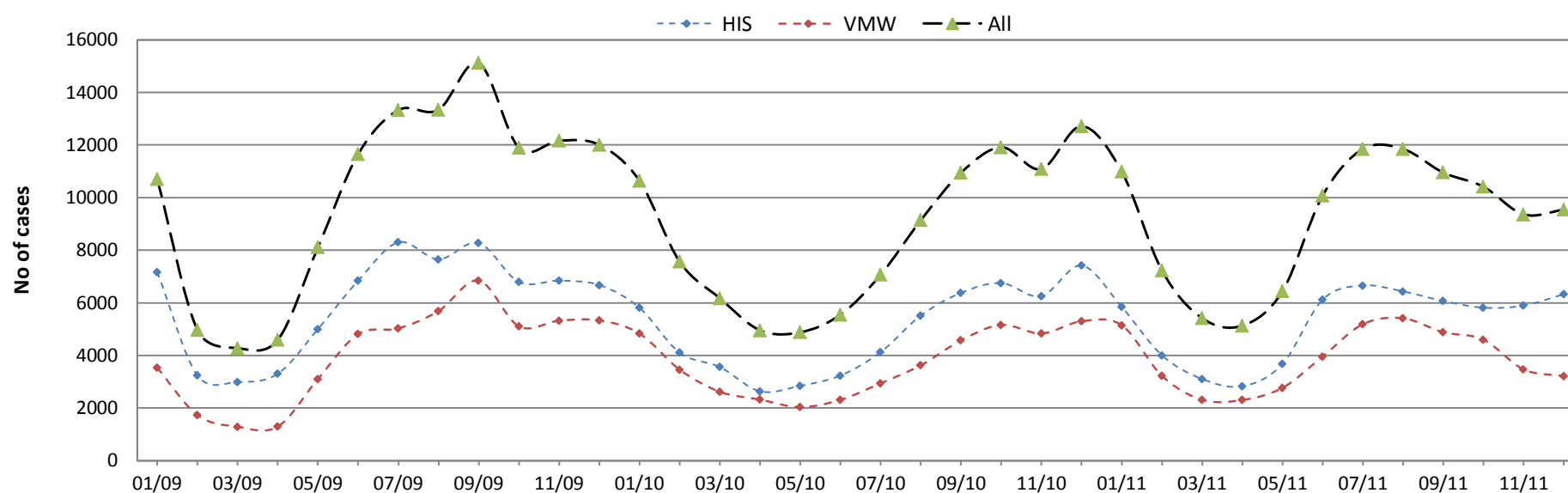
DECEMBER 2011 BULLETIN, DATA TO 4TH QUARTER, CNM, CAMBODIA

Estimated coverage (possession) with LLIN or retreated mosquito net	
No. of persons at risk of malaria (pop of target villages)	3,204,193
No. of LLIN distributed YTD	768,390
No. of LLIN distributed YTD	433,442
No. of conventional nets distributed and retreated YTD	329,727
No. of long lasting nets distributed in previous 3 years	2,326,287
Estimated coverage with LLIN / treated net (1 net / 1 pers)	83%

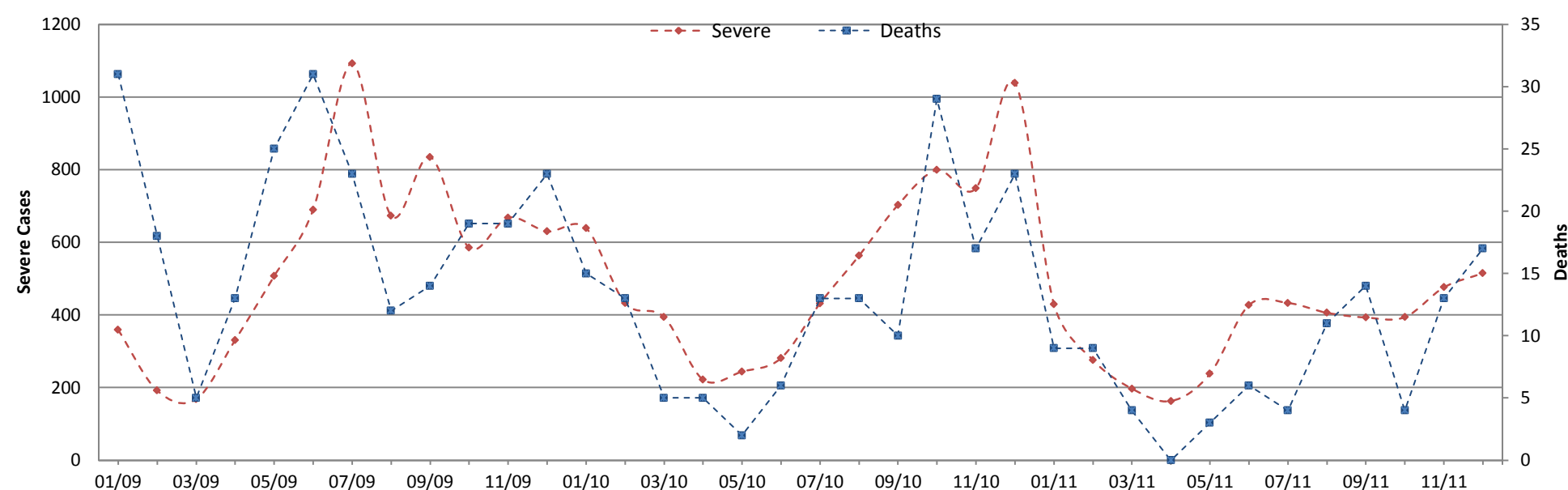
Indicators	HIS			VMW			Total		
	2010	2011	Change	2010	2011	Change	2010	2011	Change
Total malaria cases	58,621	62,770	7%	43,852	46,218	3%	102,473	108,988	6%
Severe malaria cases	6,498	4,347	-33%				6,498	4,347	-33%
Malaria deaths	151	94	-38%	3	2	-33%	154	96	-38%
Test positivity rate	34%	36%	5%	36%	35%	-1%			

TRENDS IN SURVEILLANCE

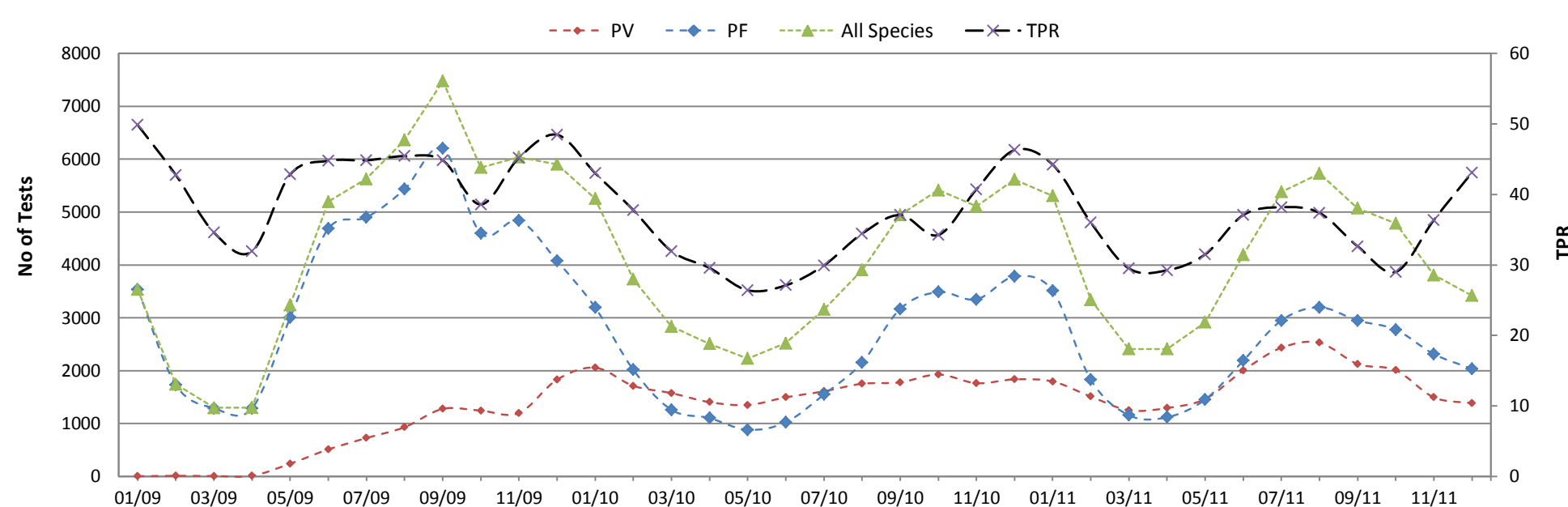
Treated malaria cases from HIS and VMW by month



Severe malaria cases and deaths from HIS by month



VMW test results by month

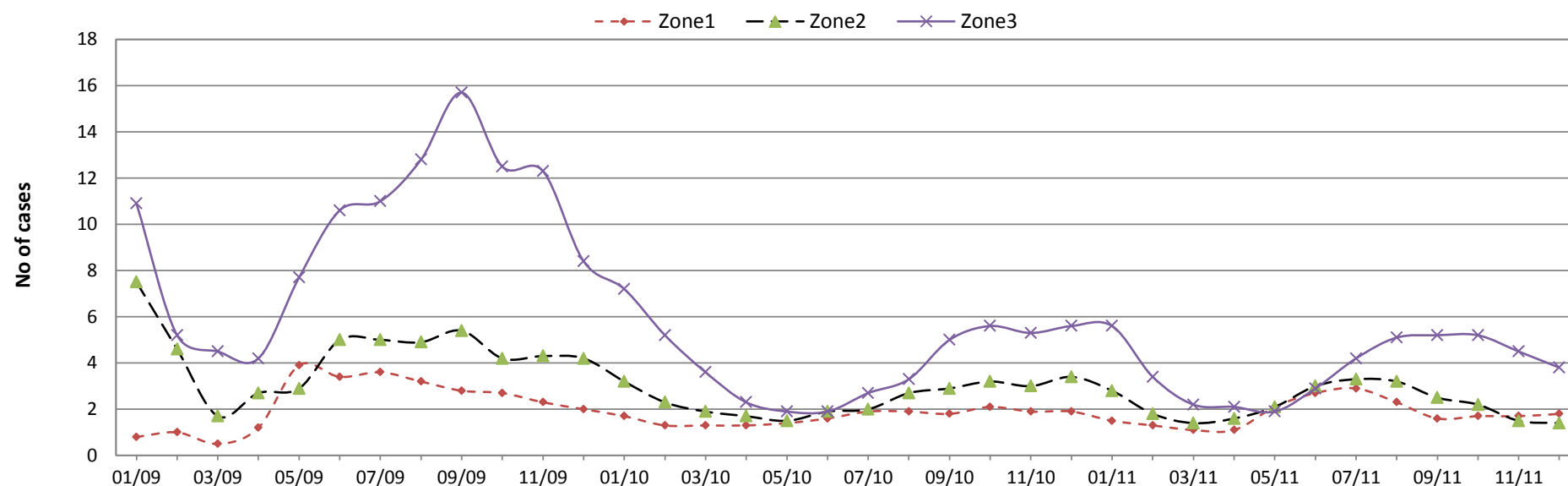


CONTAINMENT INDICATORS

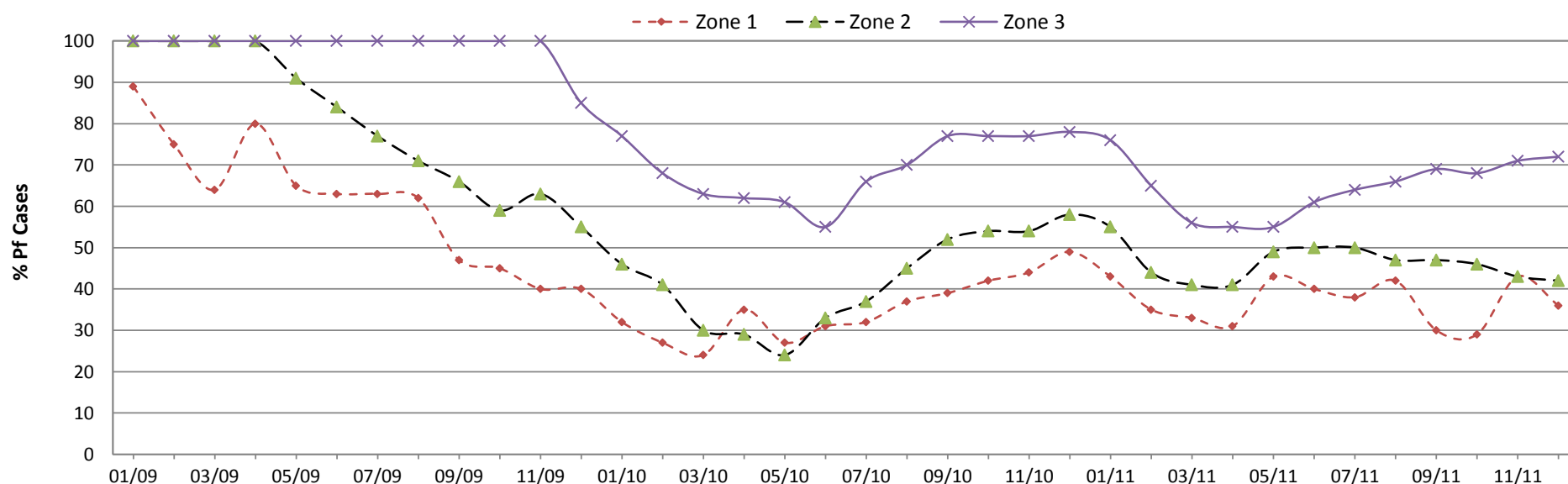
Estimated coverage (possession) with LLIN or retreated mosquito net					VMW RDT tests						
Indicators	Zone 1	Zone 2	Zone 3	Total	Zone	TPR			%Pf		
						2010	2011	Change	2010	2011	Change
No. of persons at risk of malaria (pop of target villages)	385,063	1,286,837	1,527,494	3,204,193	Zone 1	30%	34%	14%	36%	38%	5%
No. of LLIN distributed YTD	6,084	35,059	727,247	768,390	Zone 2	32%	31%	-4%	45%	48%	7%
No. of LLIHN distributed YTD	18,637	190,304	224,343	433,284	Zone 3	41%	40%	-2%	72%	67%	-7%
No. of conventional nets distributed and retreated YTD	39,471	77,916	212,265	329,652							
No. of long lasting nets distributed in previous 3 years	302,611	720,183	1,299,909	2,322,703							
Estimated coverage with LLIN / treated net (1 net / 1 pers)	89%	62%	99%	83%							

National Surveillance data for the period Jan - Dec												
Indicators	HIS treated cases			VMW treated cases			Total treated cases			Incidence (per 1000 pop)		
	2010	2011	Change	2010	2011	Change	2010	2011	Change	2010	2011	Change
Z1 Total malaria cases	5,338	4,914	-8%	4,706	5,029	7%	10,044	9,943	-1%	26.08	25.82	-1%
Z1 Severe malaria cases	327	409	25%				327	409	25%	0.85	1.06	25%
Z1 Malaria deaths	4	4	0%	0	0	0%	4	4	0%	0.01	0.01	0%
Z2 Total malaria cases	17,231	18,614	8%	16,274	17,070	5%	33,505	35,684	7%	26.04	27.73	7%
Z2 Severe malaria cases	1,622	1,262	-22%				1,622	1,262	-22%	1.26	0.98	-22%
Z2 Malaria deaths	33	19	-42%	2	1	-50%	33	19	-42%	0.03	0.01	-42%
Z3 Total malaria cases	25,984	23,952	-8%	22,872	24,119	5%	48,856	48,071	-2%	31.98	31.47	-2%
Z3 Severe malaria cases	3,339	1,790	-46%				3,339	1,790	-46%	2.19	1.17	-46%
Z3 Malaria deaths	96	53	-45%	1	1	0%	96	53	-45%	0.06	0.03	-45%
Z4 Total malaria cases	10,068	15,290	52%	2	0	-100%	10,070	15,290	52%	n/a	n/a	n/a
Z4 Severe malaria cases	1,210	886	-27%				1,210	886	-27%	n/a	n/a	n/a
Z4 Malaria deaths	18	18	0%	0	0	0%	18	18	0%	n/a	n/a	n/a

Malaria Cases per VMW by month



Percentage of Pf cases diagnosed by VMW per month



Surveillance Data by District, Jan-Dec 2011

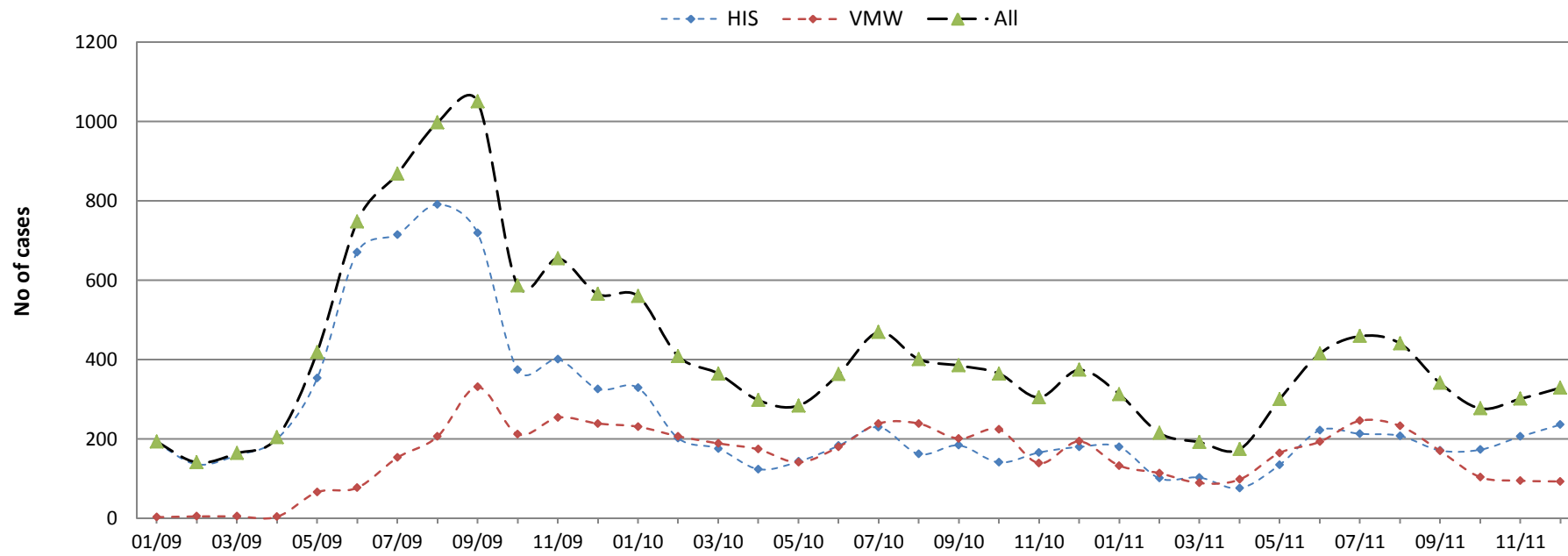
Province / Op. District	Population (x1000)		Health Facility (HIS)									Village Malaria Workers												Incidence (per 1000 pop)								
			All Cases			Severe			Deaths			All Cases			Treated Pf			Treated Pv			Referred Pf			Referred Pv			TPR					
			2010	2011	Change	2010	2011	Change	2010	2011	Change	2010	2011	Change	2010	2011	Change	2010	2011	Change	2010	2011	Change	2010	2011	Change	2010	2011	Change	2010	2011	Change
Bakan	129	131	492	832	69%	37	18	-51%	0	0	0%	0	0	0%	0	0	0%	0	0	0%	0	0	0%	0%	0%	0%	3.82	6.37	67%			
Sampov Meas	280	284	4327	4859	12%	183	202	10%	2	2	0%	2009	2472	23%	798	1021	28%	1191	1382	16%	9	34	278%	11	35	218%	42%	49%	18%	22.55	25.53	13%
Ratanakiri	156	158	8062	6943	-14%	1426	447	-69%	38	11	-71%	7642	8027	5%	6191	6035	-3%	1424	1959	38%	12	19	58%	15	14	-7%	41%	43%	5%	100.81	94.60	-6%
Kralanh	83	85	601	467	-22%	16	28	75%	1	1	0%	767	375	-51%	375	200	-47%	6	125	1983%	7	3	-57%	379	47	-88%	17%	9%	-48%	11.78	9.35	-21%
Siem Reap	919	933	5506	5221	-5%	317	179	-44%	14	12	-14%	4227	3797	-10%	2086	1843	-12%	624	1459	134%	102	72	-29%	1415	423	-70%	29%	26%	-8%	8.94	9.14	2%
Siem Reap	370	376	1488	1567	5%	126	149	18%	13	10	-23%	1270	1348	6%	554	585	6%	193	607	215%	37	36	-3%	486	120	-75%	35%	39%	12%	6.03	7.34	22%
Sihanoukville	228	232	380	1046	175%	22	4	-82%	5	1	-80%	159	176	11%	85	84	-1%	72	74	3%	1	9	800%	1	9	800%	49%	56%	14%	2.35	5.20	121%
Sot Nikum	260.60	264.62	1318	1714	30%	113	2	-98%	0	1	100%	1171	1204	3%	747	749	0%	393	452	15%	0	0	0%	31	3	-90%	42%	38%	-10%	9.43	11.02	17%
Stung Treng	114.42	116.18	1669	2459	47%	120	134	12%	6	6	0%	4167	5241	26%	2925	3545	21%	1225	1452	19%	4	218	5350%	13	26	100%	42%	42%	1%	50.86	64.17	26%
Ankor Chhum	201.72	204.83	2099	1473	-30%	62	0	-100%	0	0	0%	1019	870	-15%	410	309	-25%	32	275	759%	58	33	-43%	519	253	-51%	26%	23%	-9%	12.60	10.04	-20%
Sihanouk	226.38	229.87	380	1046	175%	22	4	-82%	5	1	-80%	159	176	11%	85	84	-1%	72	74	3%	1	9	800%	1	9	800%	49%	56%	14%	2.37	5.24	121%
Steung Treng	114.42	116.18	1669	2459	47%	120	134	12%	6	6	0%	4167	5241	26%	2925	3545	21%	1225	1452	19%	4	218	5350%	13	26	100%	42%	42%	1%	50.86	64.17	26%
Svay Rieng	497.77	505.44	174	240	38%	70	38	-46%	2	4	100%	0	0	0%	0	0	0%	0	0	0%	0	0	0%	0	0	0%	0%	0%	0%	0.35	0.47	36%
Chi Phu	0.00	0.00	29	39	34%	4	3	-25%	0	0	0%	0	0	0%	0	0	0%	0	0	0%	0	0	0%	0	0	0%	0%	0%	0%			0%
Romeas Hek	0.00	0.00	84	111	32%	36	19	-47%	0	0	0%	0	0	0%	0	0	0%	0	0	0%	0	0	0%	0	0	0%	0%	0%	0%			0%
Svay Rieng	0.00	0.00	61	90	48%	30	16	-47%	2	4	100%	0	0	0%	0	0	0%	0	0	0%	0	0	0%	0	0	0%	0%	0%	0%			0%
Ang Rokar	119.25	121.08	671	969	44%	46	19	-59%	0	0	0%	0	0	0%	0	0	0%	0	0	0%	0	0	0%	0	0	0%	0%	0%	0%	5.63	8.00	42%
Bati	187.53	190.41	30	46	53%	1	0	-100%	0	0	0%	0	0	0%	0	0	0%	0	0	0%	0	0	0%	0	0	0%	0%	0%	0%	0.16	0.24	51%
Takeo	870.96	884.37	983	1530	56%	79	63	-20%	2	3	50%	0	0	0%	0	0	0%	0	0	0%	0	0	0%	0	0	0%	0%	0%	1.13	1.73	53%	
Daun Keo	190.12	193.05	102	179	75%	23	42	83%	2	3	50%	0	0	0%	0	0	0%	0	0	0%	0	0	0%	0	0	0%	0%	0%	0%	0.54	0.93	73%
Oddar Meanchey	190.12	193.05	3363	3027	-10%	247	128	-48%	2	0	-100%	5078	2903	-43%	997	473	-53%	3805	2310	-39%	80	50	-38%	196	70	-64%	38%	32%	-17%	42.95	30.10	-30%
Kirivong	233.32	236.91	130	262	102%	9	2	-78%	0	0	0%	0	0	0%	0	0	0%	0	0	0%	0	0	0%	0	0	0%	0%	0%	0%	0.56	1.11	98%
Kep	36.86	37.43	145	135	-7%	26	6	-77%	0	0	0%	0	0	0%	0	0	0%	0	0	0%	0	0	0%	0	0	0%	0%	0%	3.93	3.61	-8%	
Prey Kabass	140.74	142.91	50	74	48%	0	0	0%	0	0	0%	0	0	0%	0	0	0%	0	0	0%	0	0	0%	0	0	0%	0%	0%	0%	0.36	0.52	46%
Pailin	72.55	73.67	575	552	-4%	11	14	27%	0	0	0%	560	331	-41%	99	37	-63%	425	242	-43%	29	46	59%	7	6	-14%	29%	20%	-30%	15.15	11.28	-26%
National Total	13786.80	13999.12	58621	62770	7%	6498	4347	-33%	151	94	-38%	47220	48769	3%	26330	26597	1%	#####	19621	12%	628	882	40%	2740	1669	-39%	36%	35%	-1%	7.43	7.79	5%

Generated from CNM Malaria Database on 09/02/2012 11:03:56 including data from Online MOH HIS

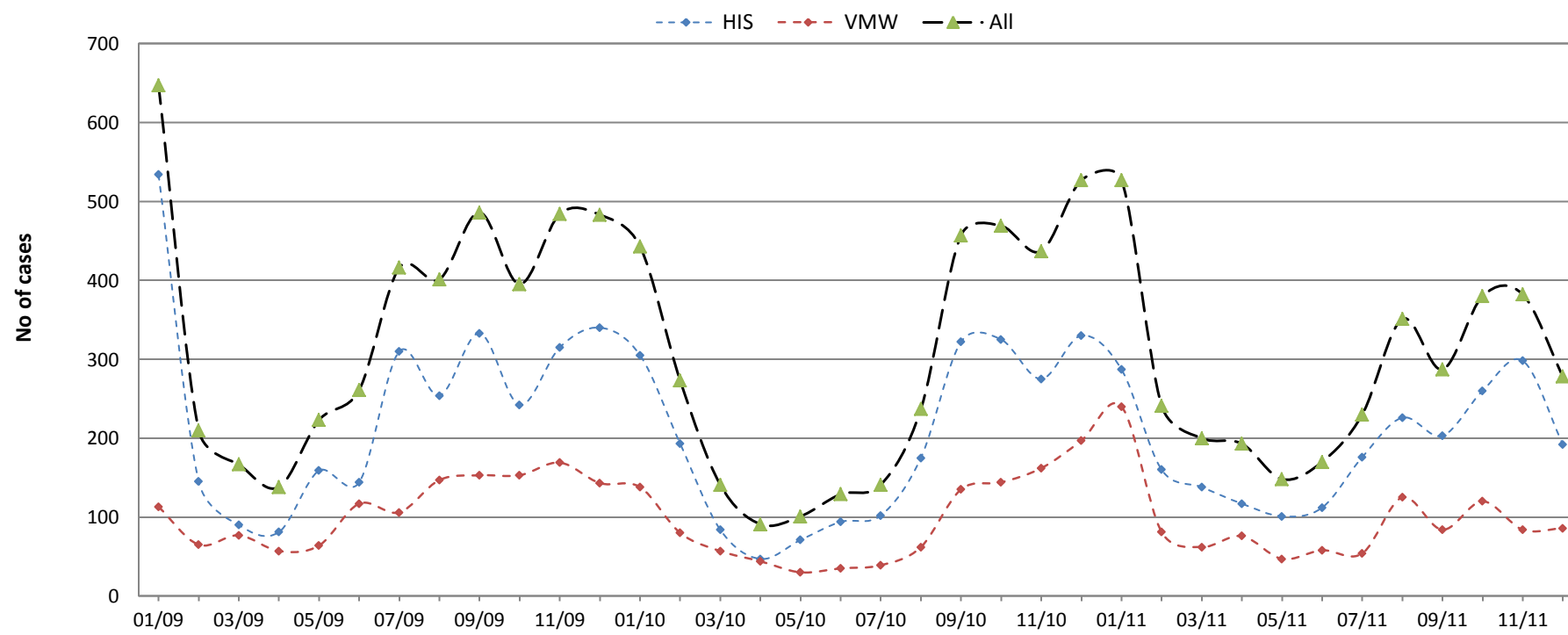
CAMBODIA MALARIA BULLETIN

MALARIA TRENDS IN BORDER AREAS*

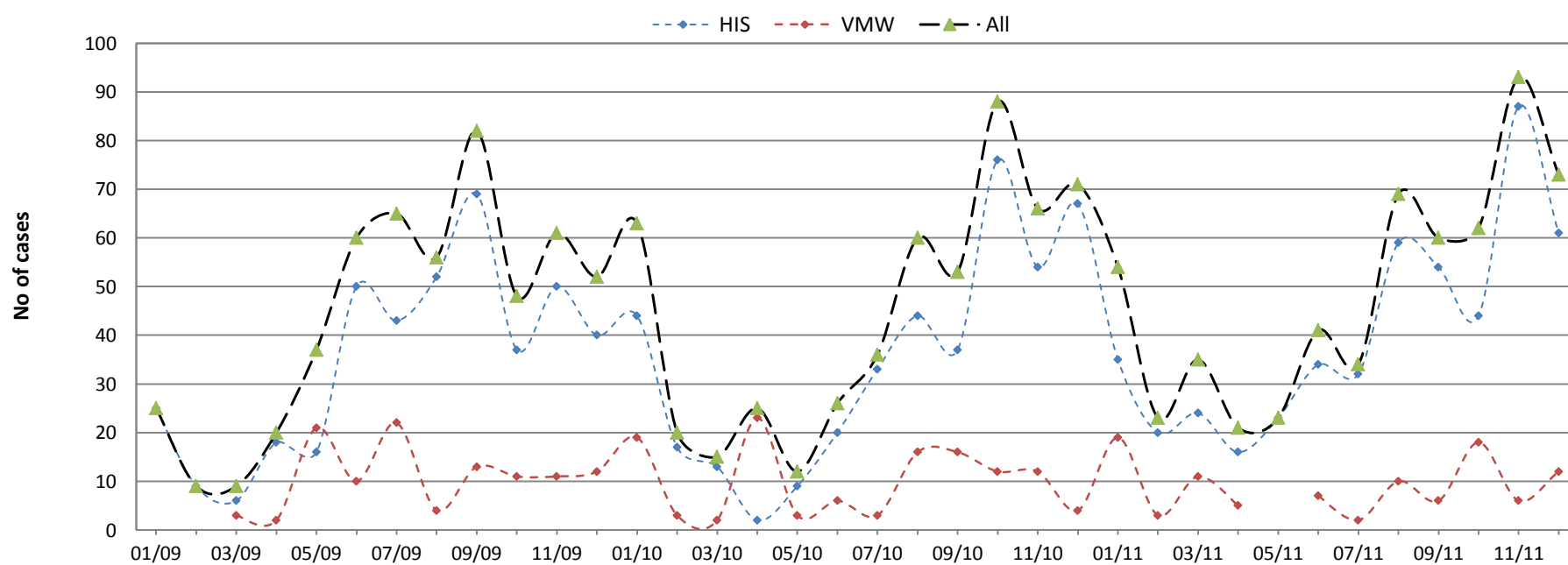
Thailand



Vietnam



Laos



* HIS data from health facilities serving border villages plus VMW data from border villages (<10km from the border).